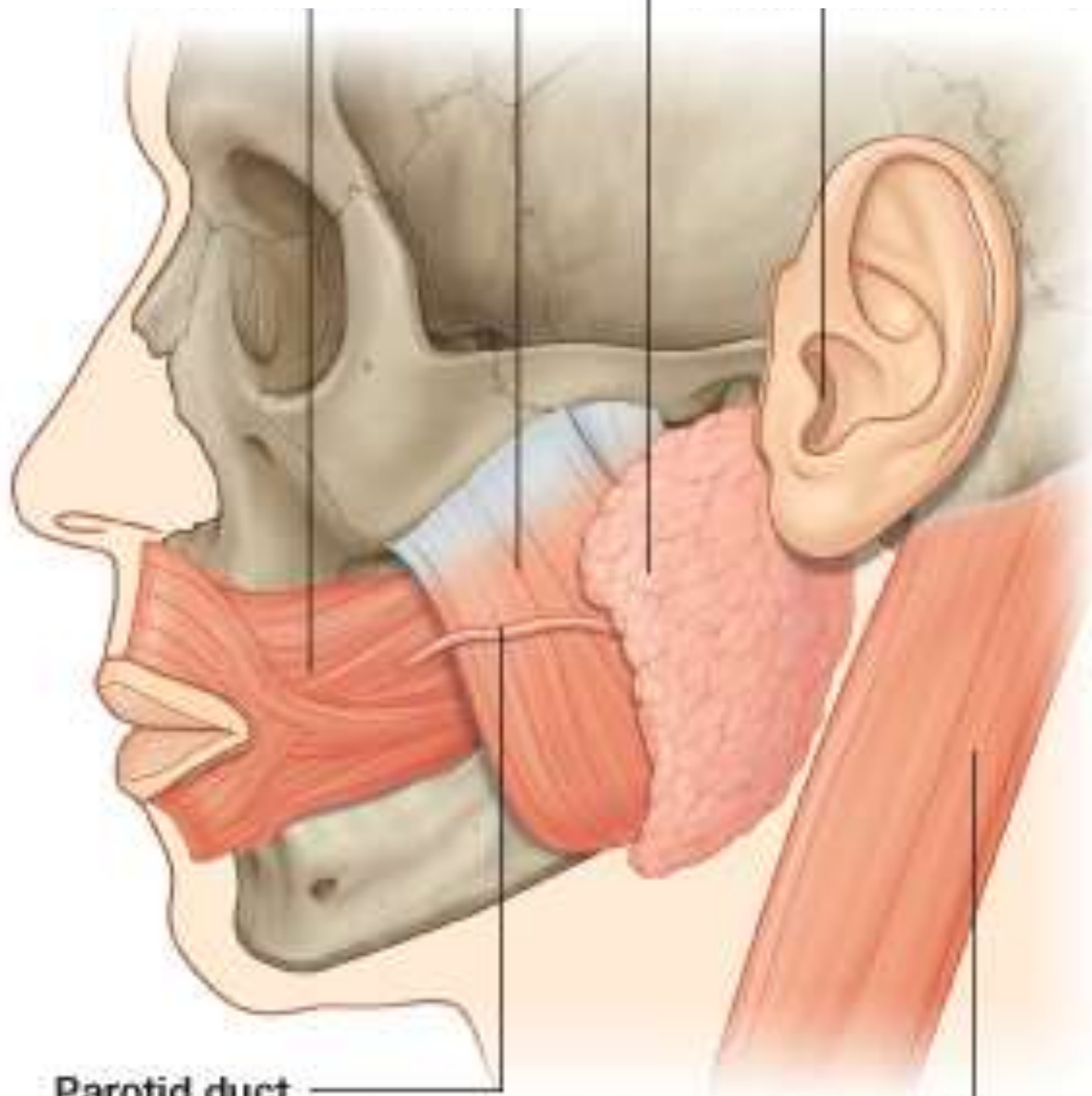


# Salivary Glands

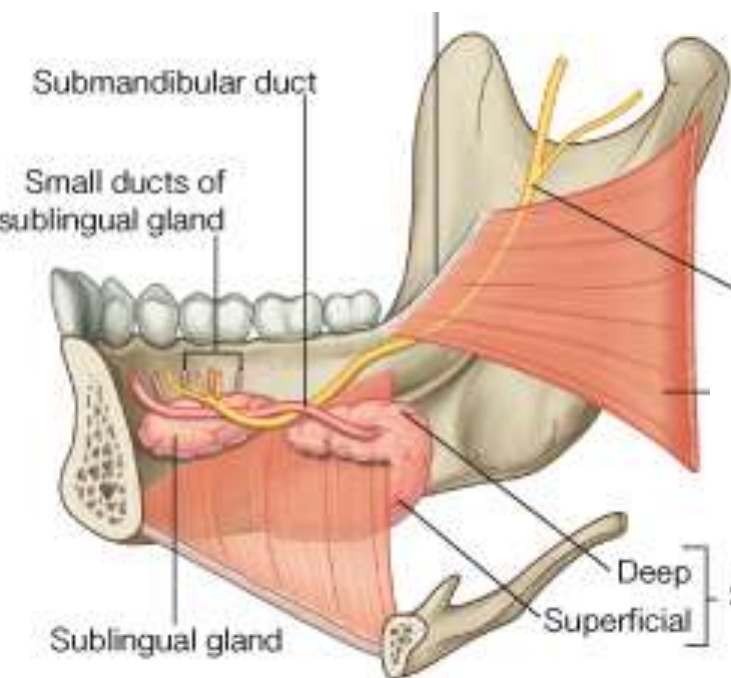
Parotid gland



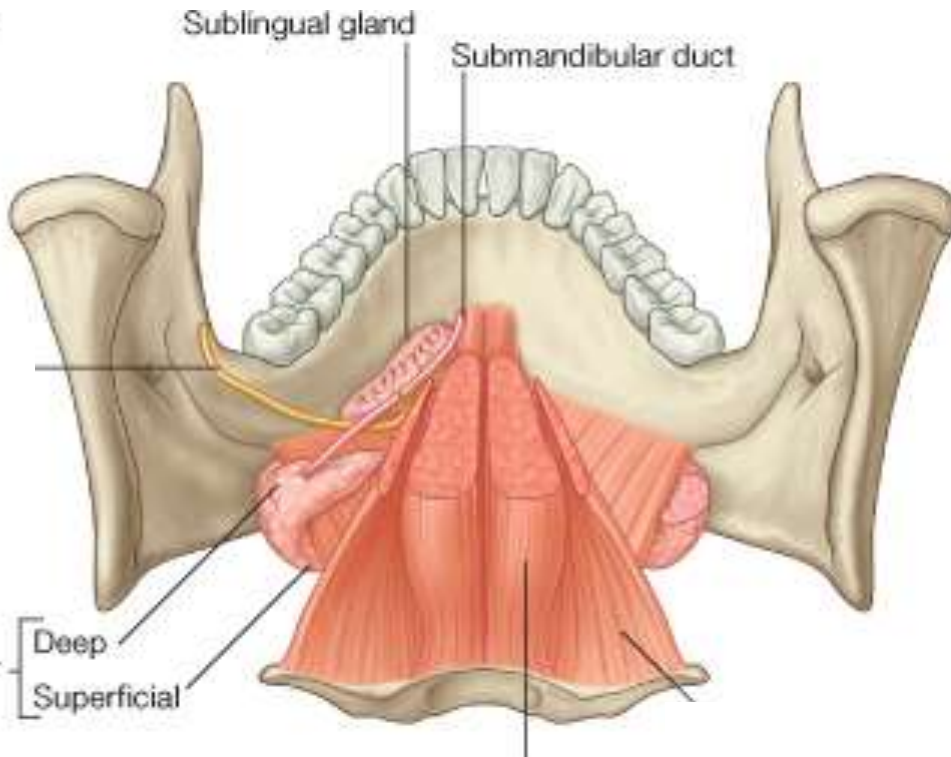
Parotid duct

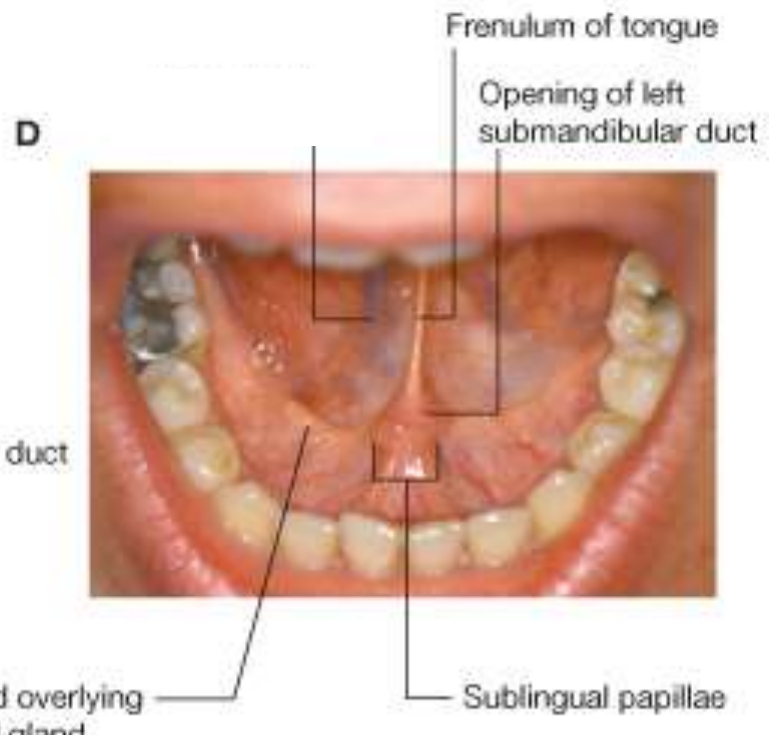
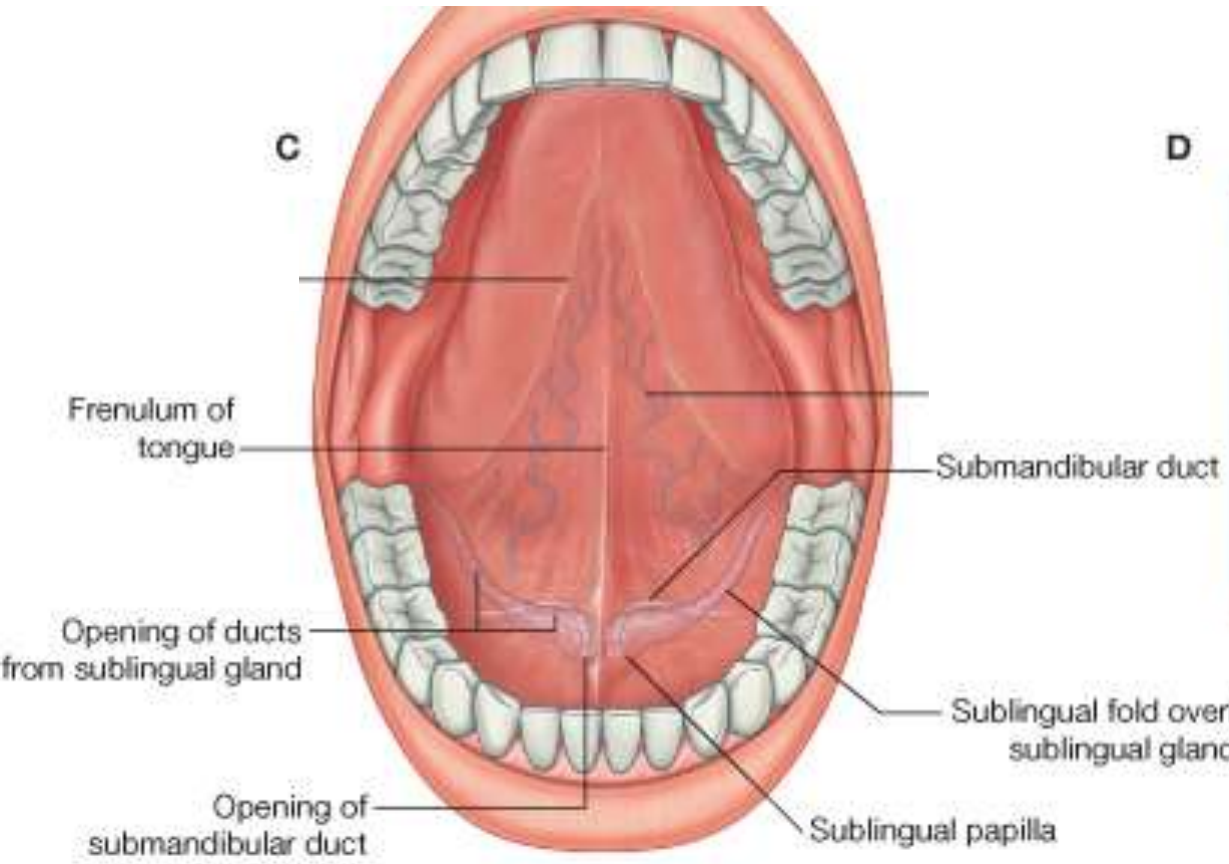
(penetrates buccinator opposite crown of 2nd upper molar tooth)

**A**



**B**





# Classification of salivary glands

## Based on size and secretion

### Major glands

parotid  
sub mandibular  
sub lingual

### Minor glands

lingual  
palatine  
labial and buccal

## Based on type of secretion

### serous gland

parotid  
von Ebner

### mucous gland

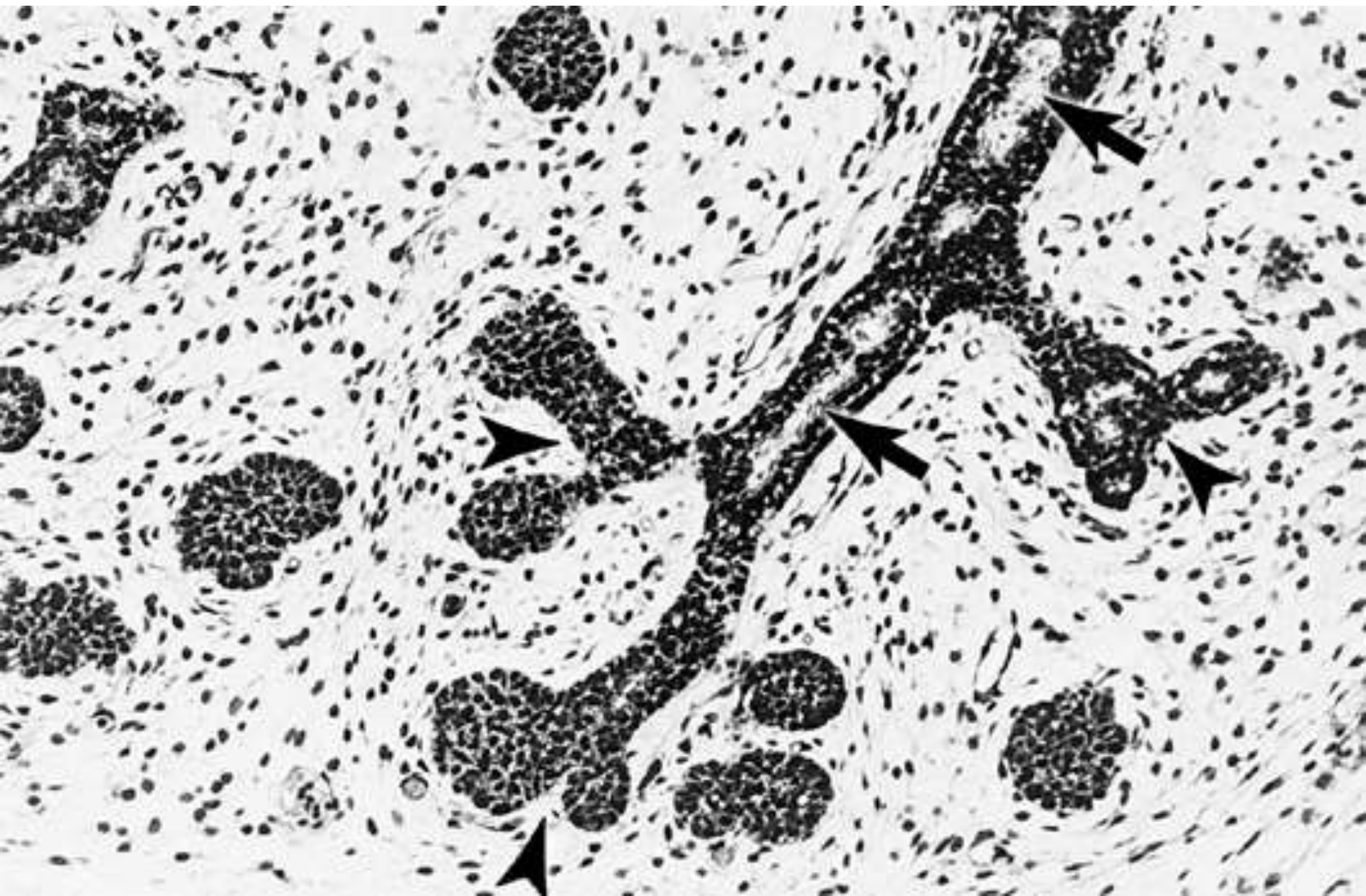
lingual (Blandin  
and Nuhn)  
palatine

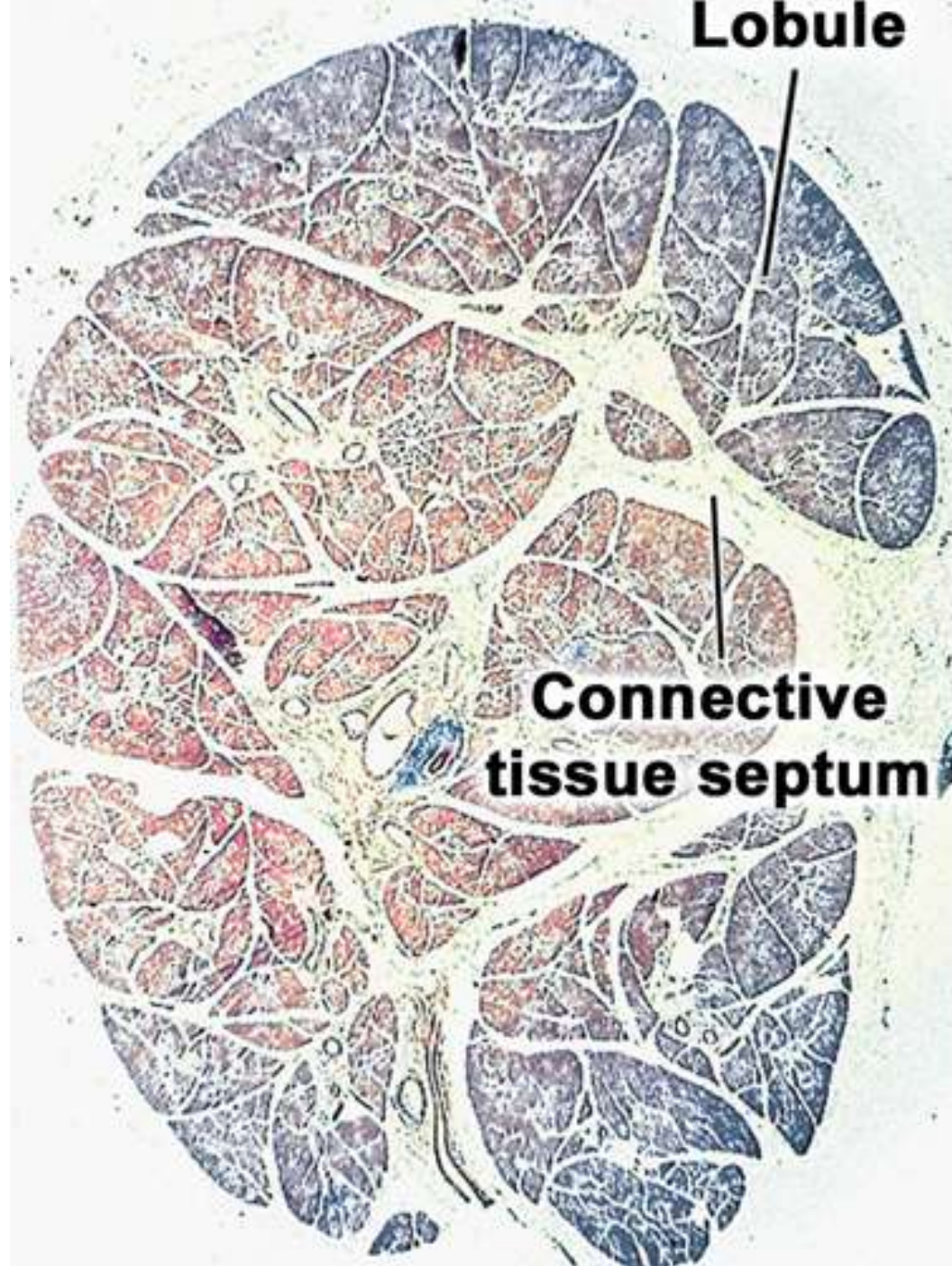
### mixed gland

sub mandibular  
sub lingual

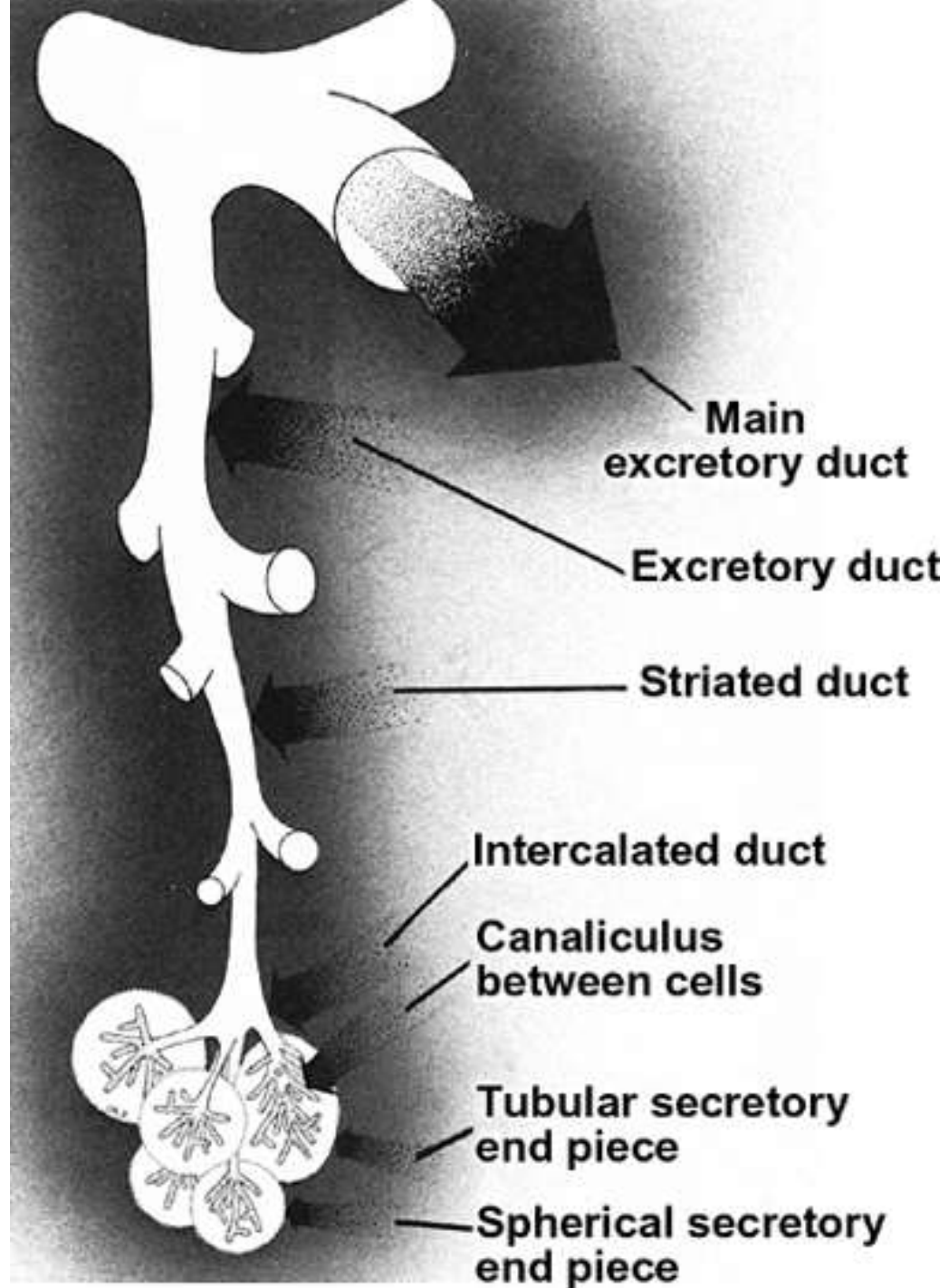


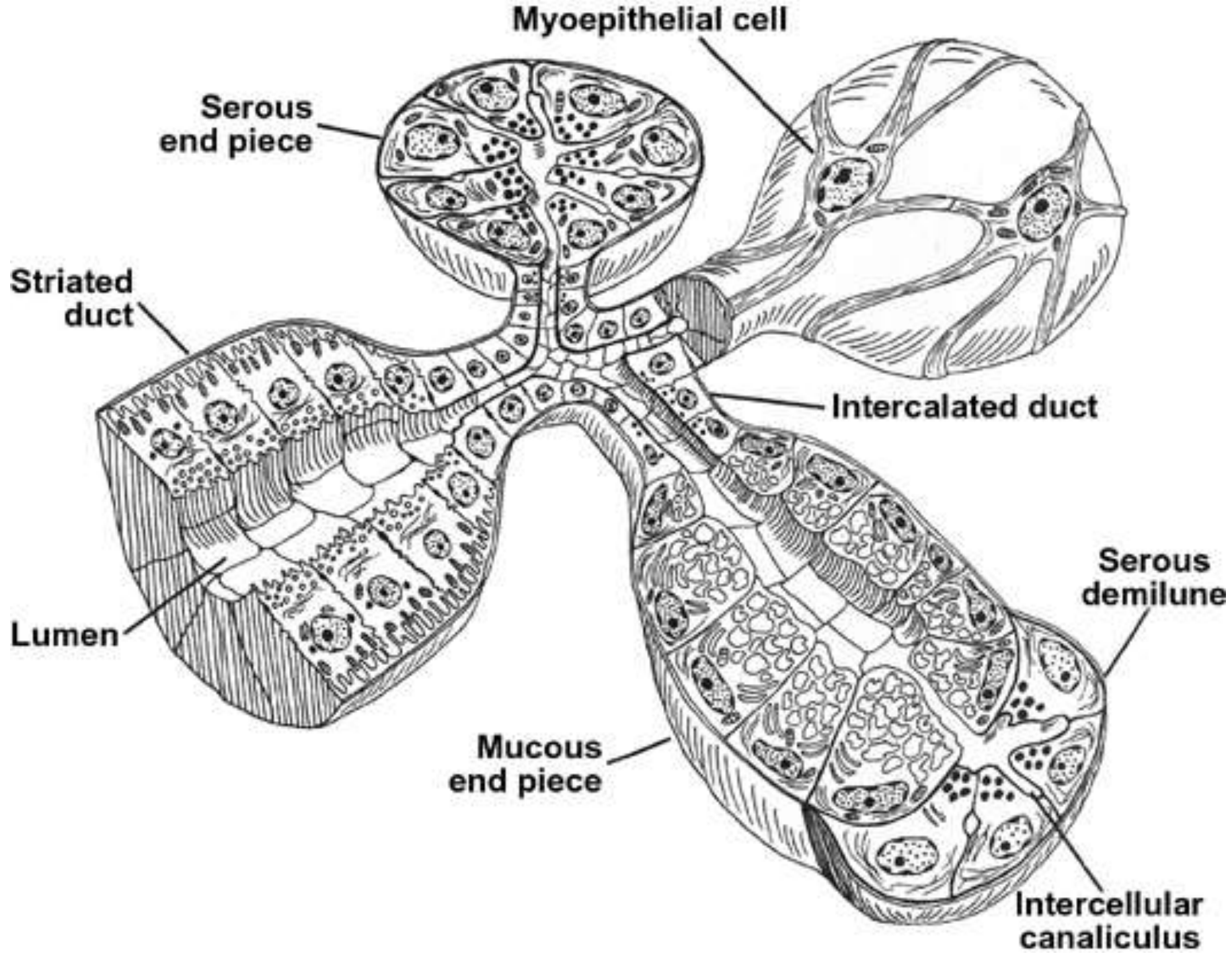












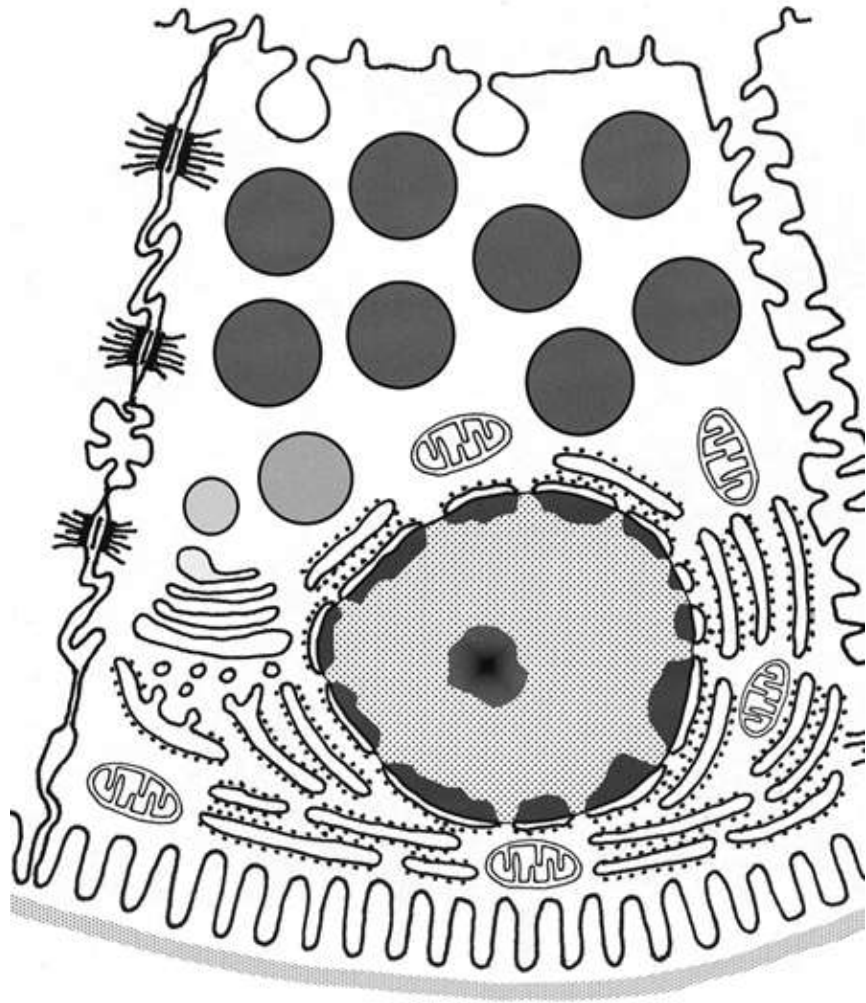
# Cells of the salivary gland

## Acinar cells

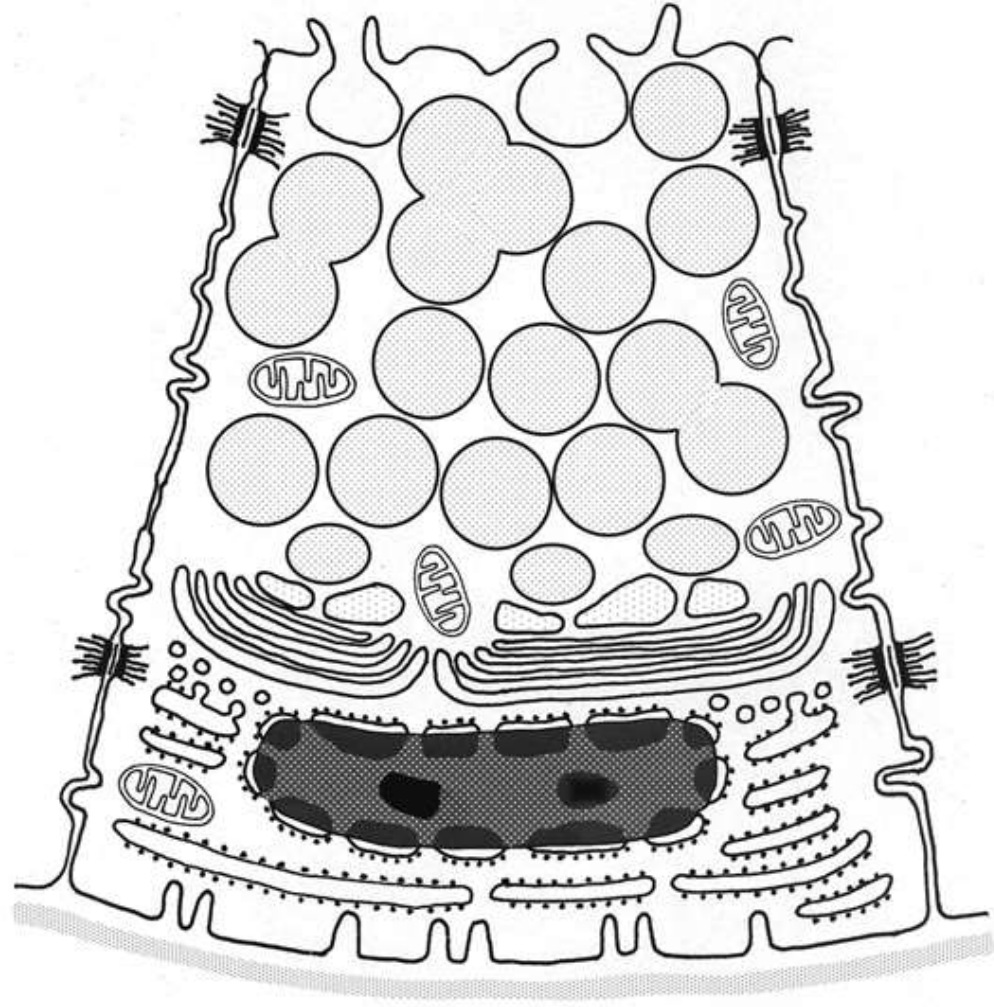
serous/mucous cell  
myoepithelial cell

## Ductal cells

intercalated duct cell  
striated duct cell  
excretory duct cell

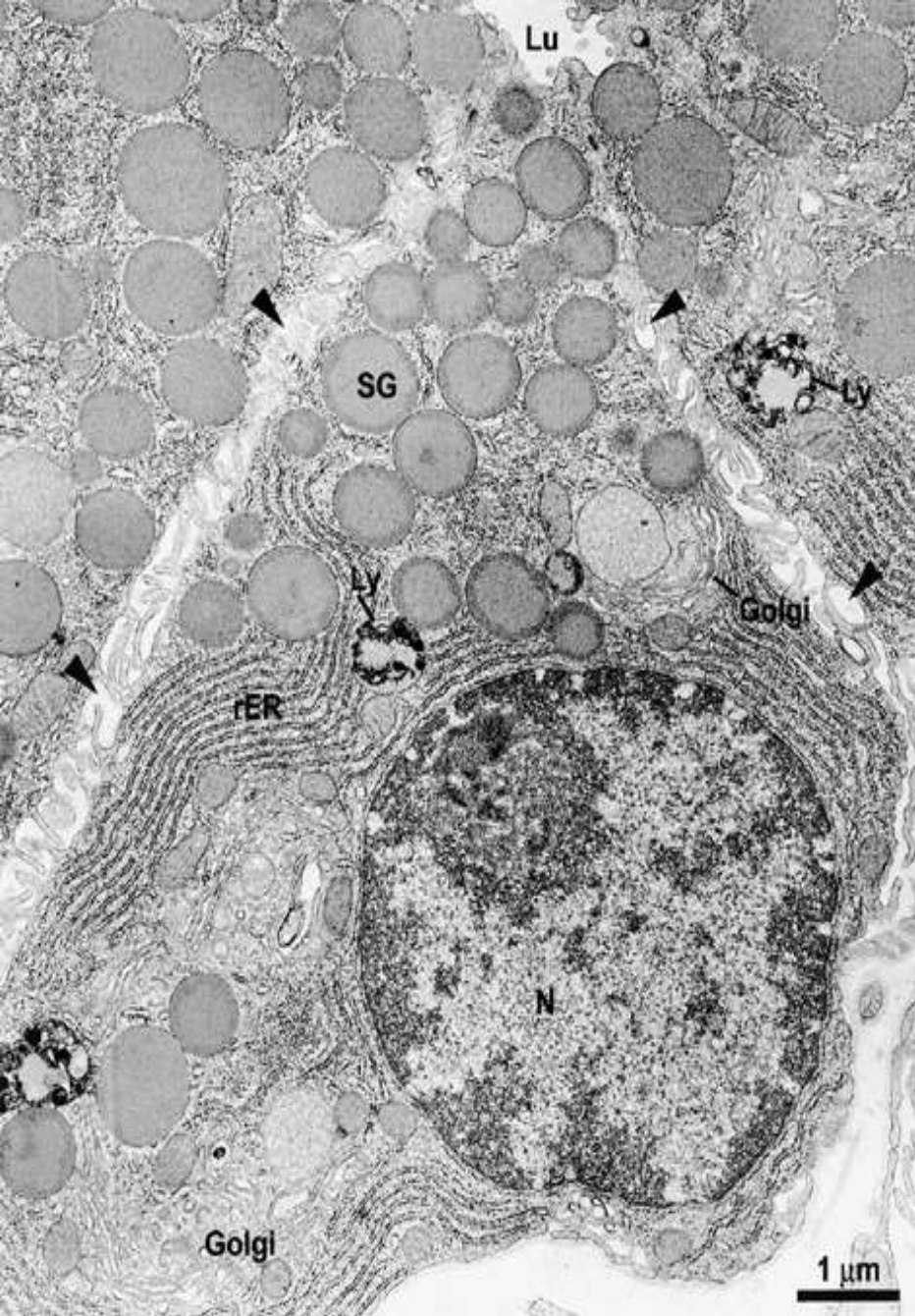


SEROUS CELL

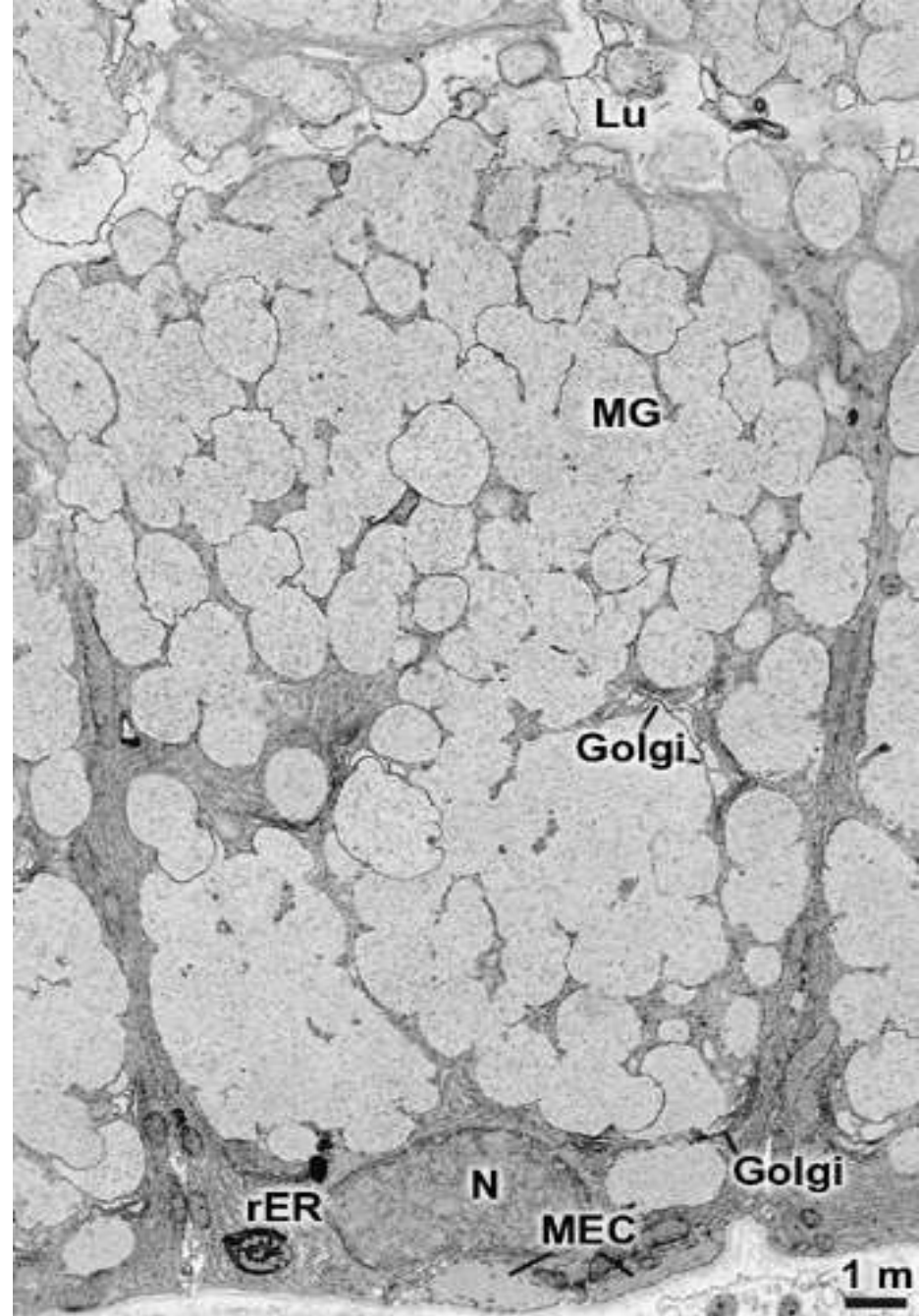


MUCOUS CELL

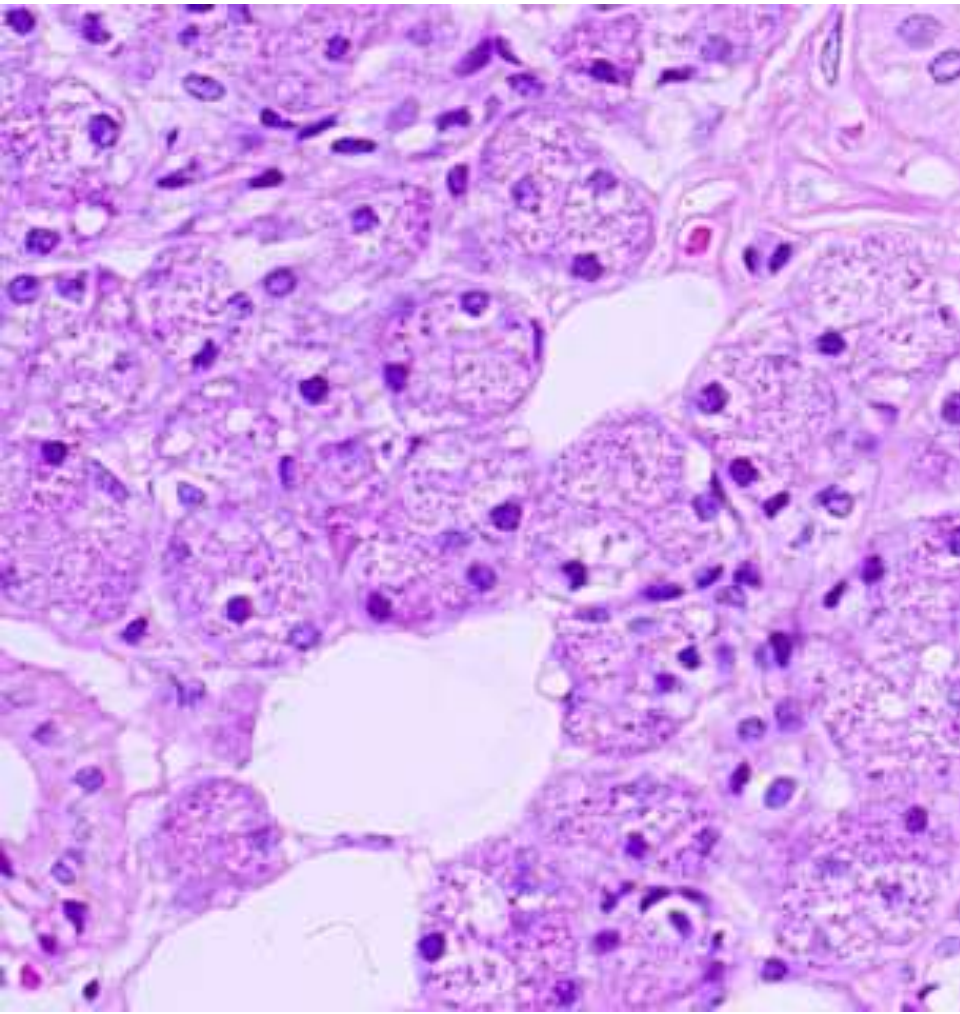




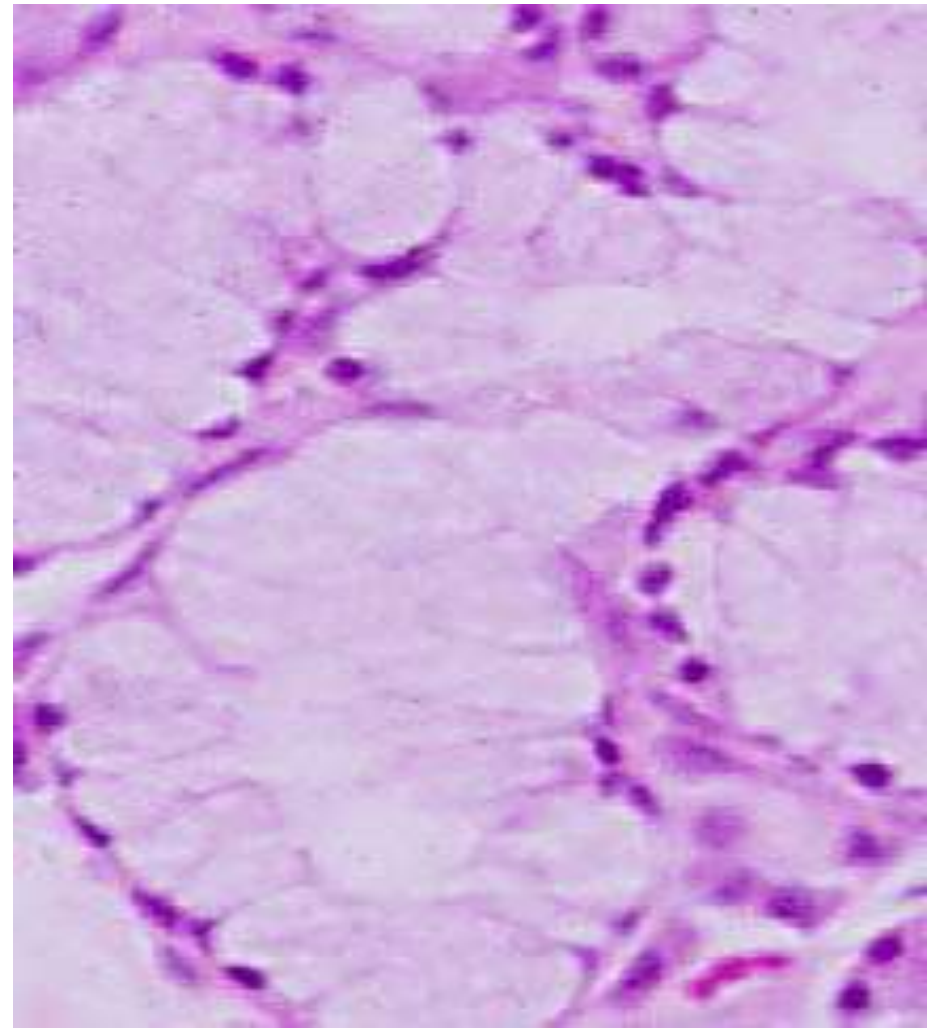
SEROUS CELL



MUCOUS CELL



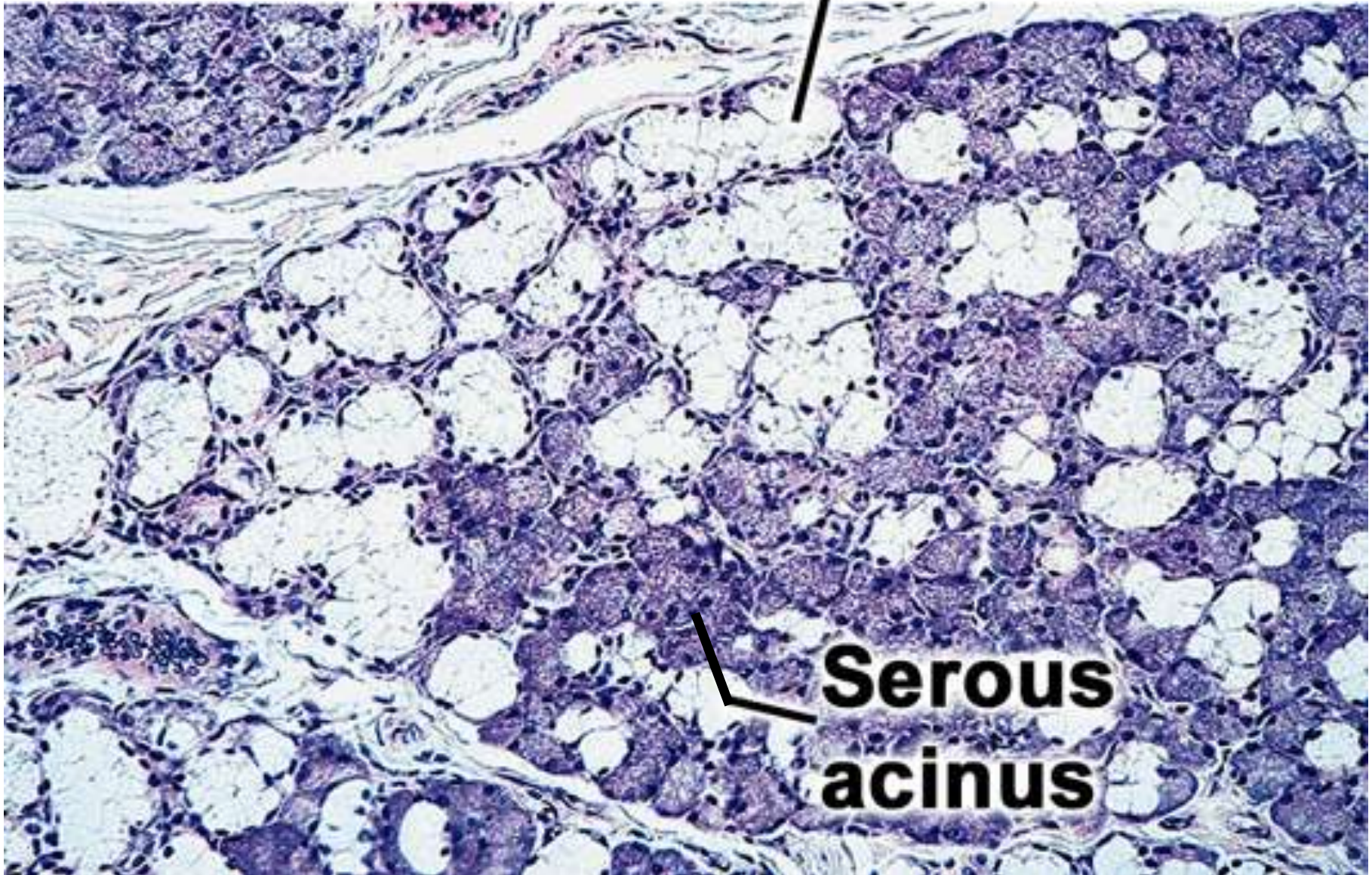
SEROUS CELL



MUCOUS CELL

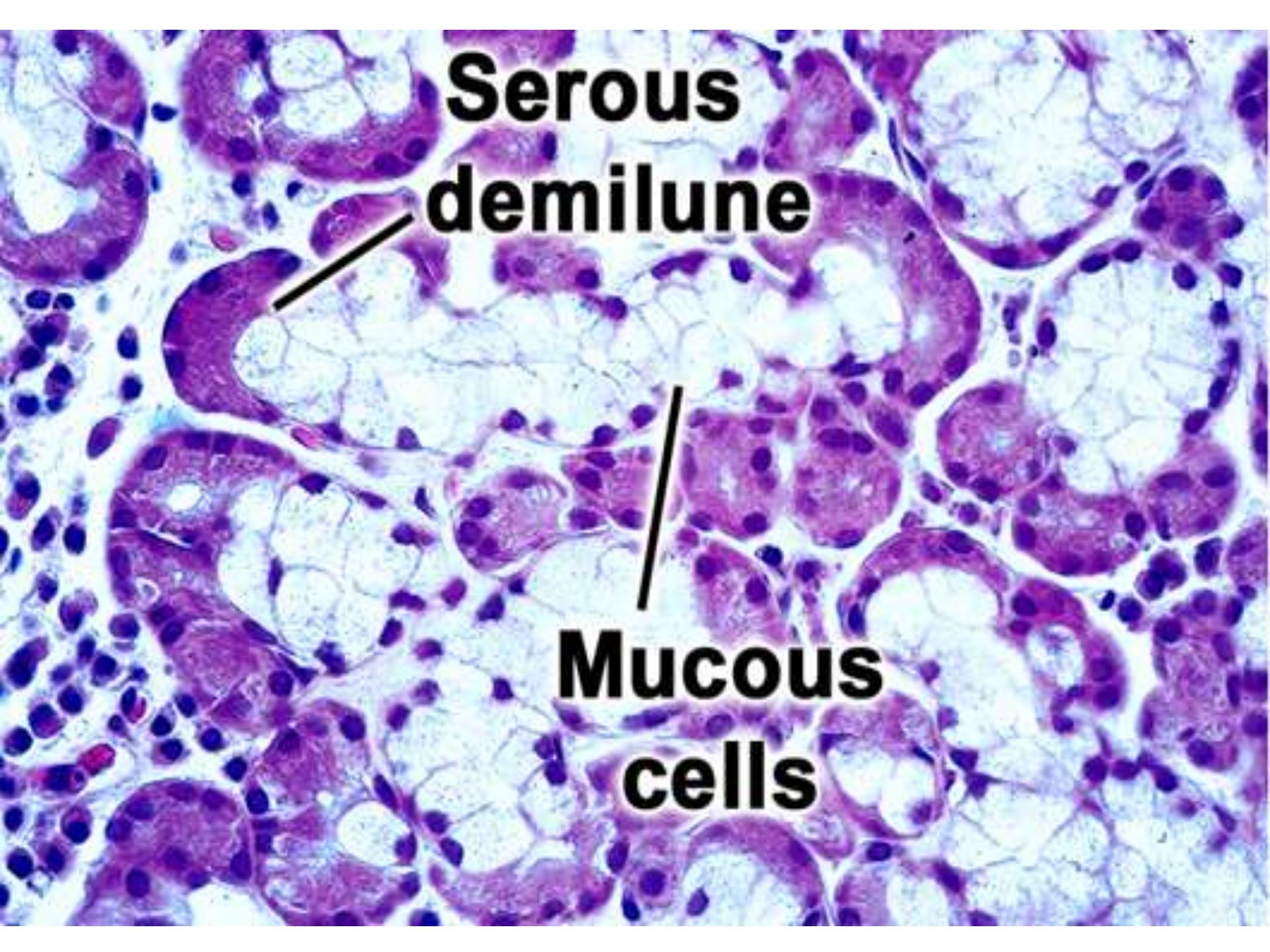


**Mucous  
acinus**



**Serous  
acinus**





**Serous  
demilune**

**Mucous  
cells**



serous cell

spherical acinus

spherical nucleus

zymogen granules

small lumen

well stained cytoplasm

demilunes absent

mucous cell

tubular acinus

flat nucleus

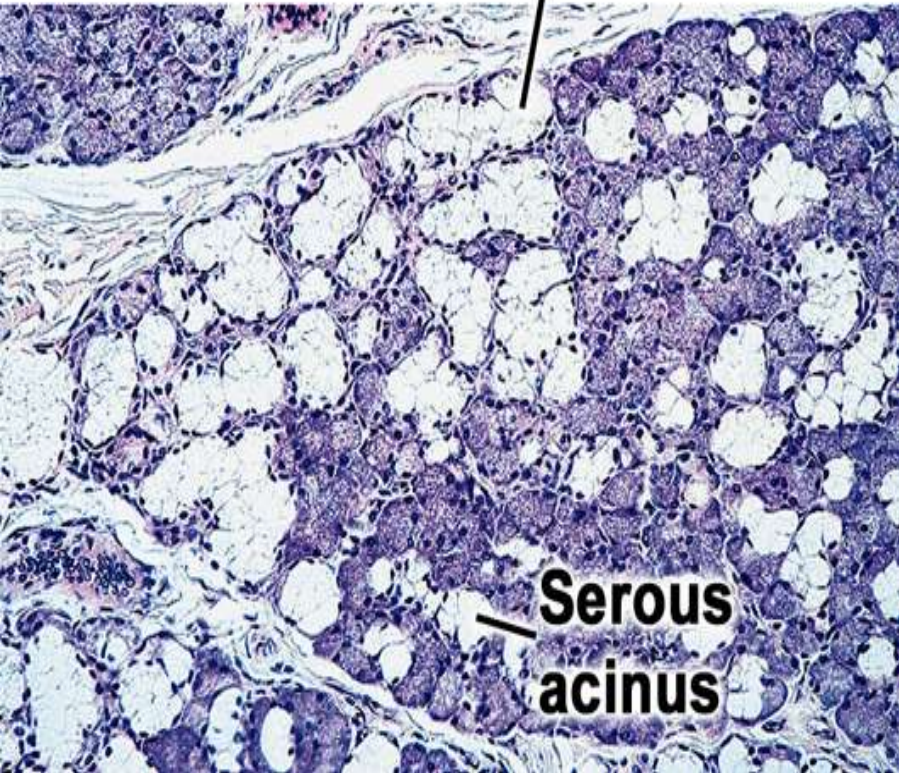
mucigen granules

larger lumen

poorly stained

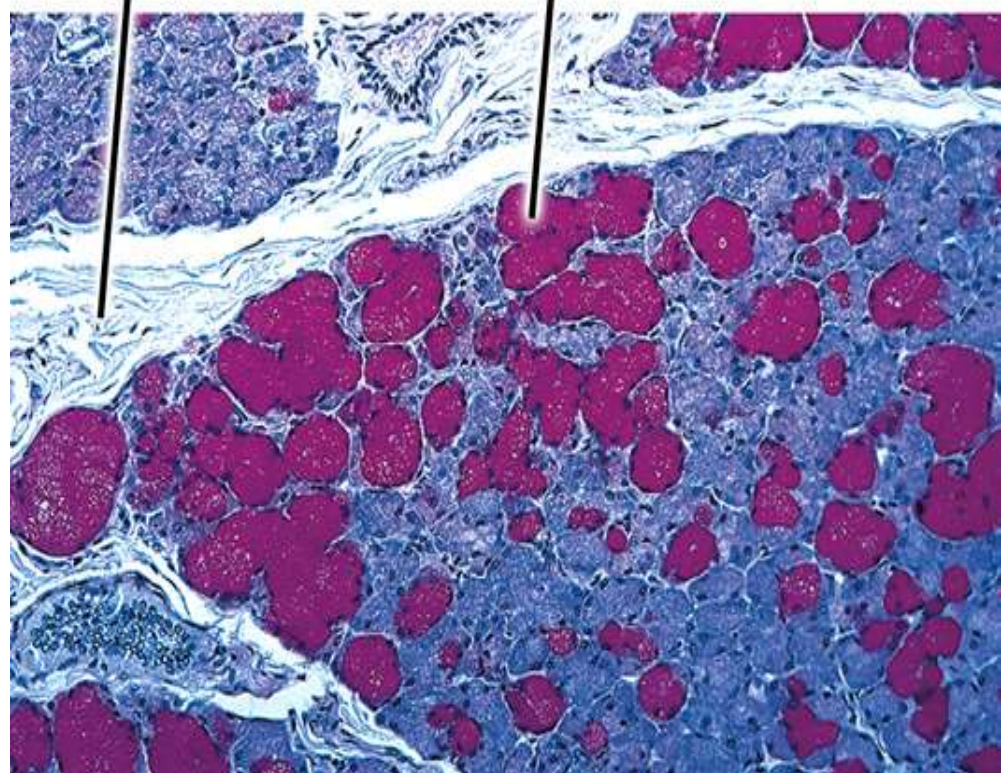
demilunes present in some cells

**Mucous  
acinus**



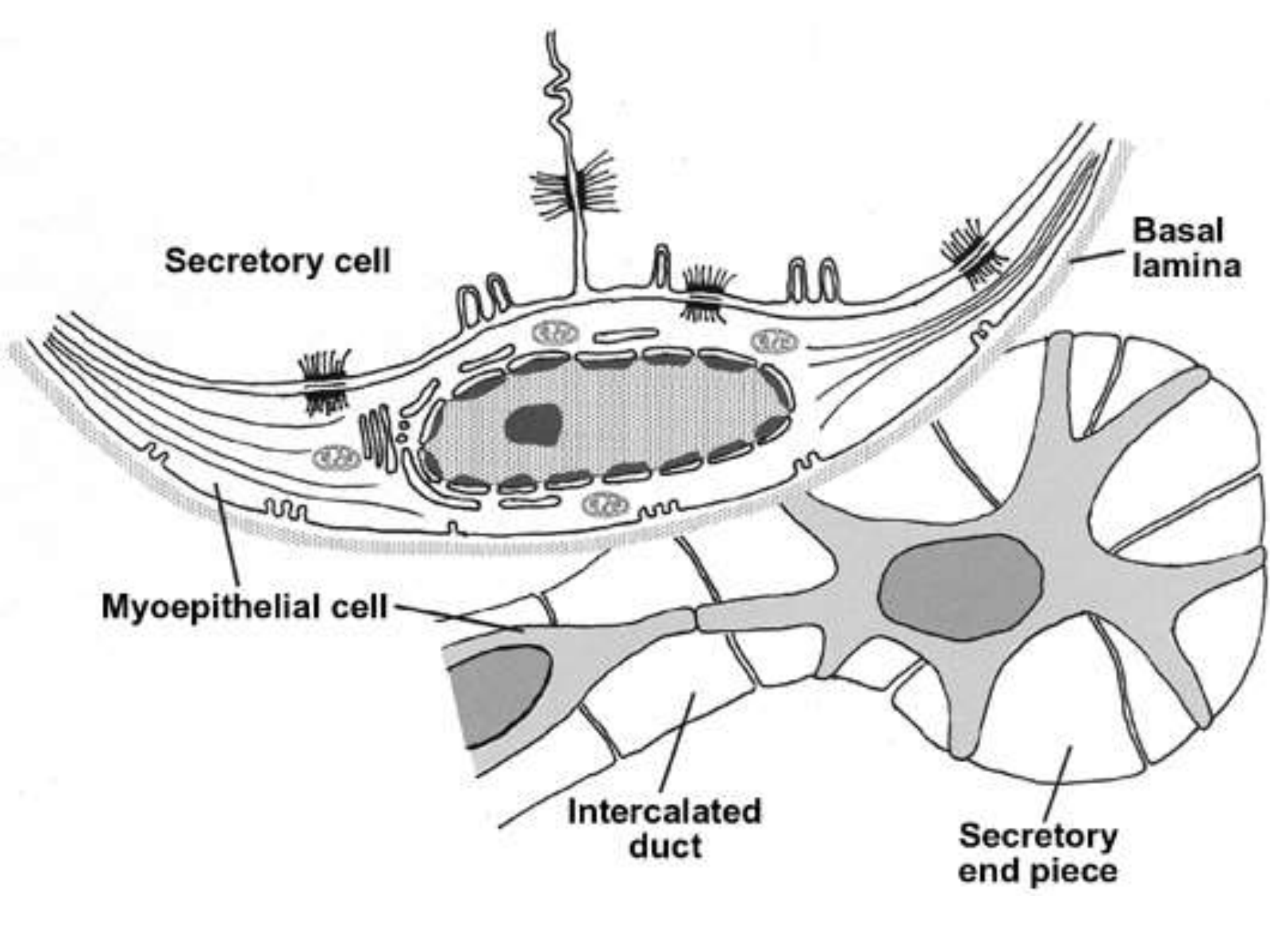
**Connective  
tissue septum**

**Mucous  
cells**

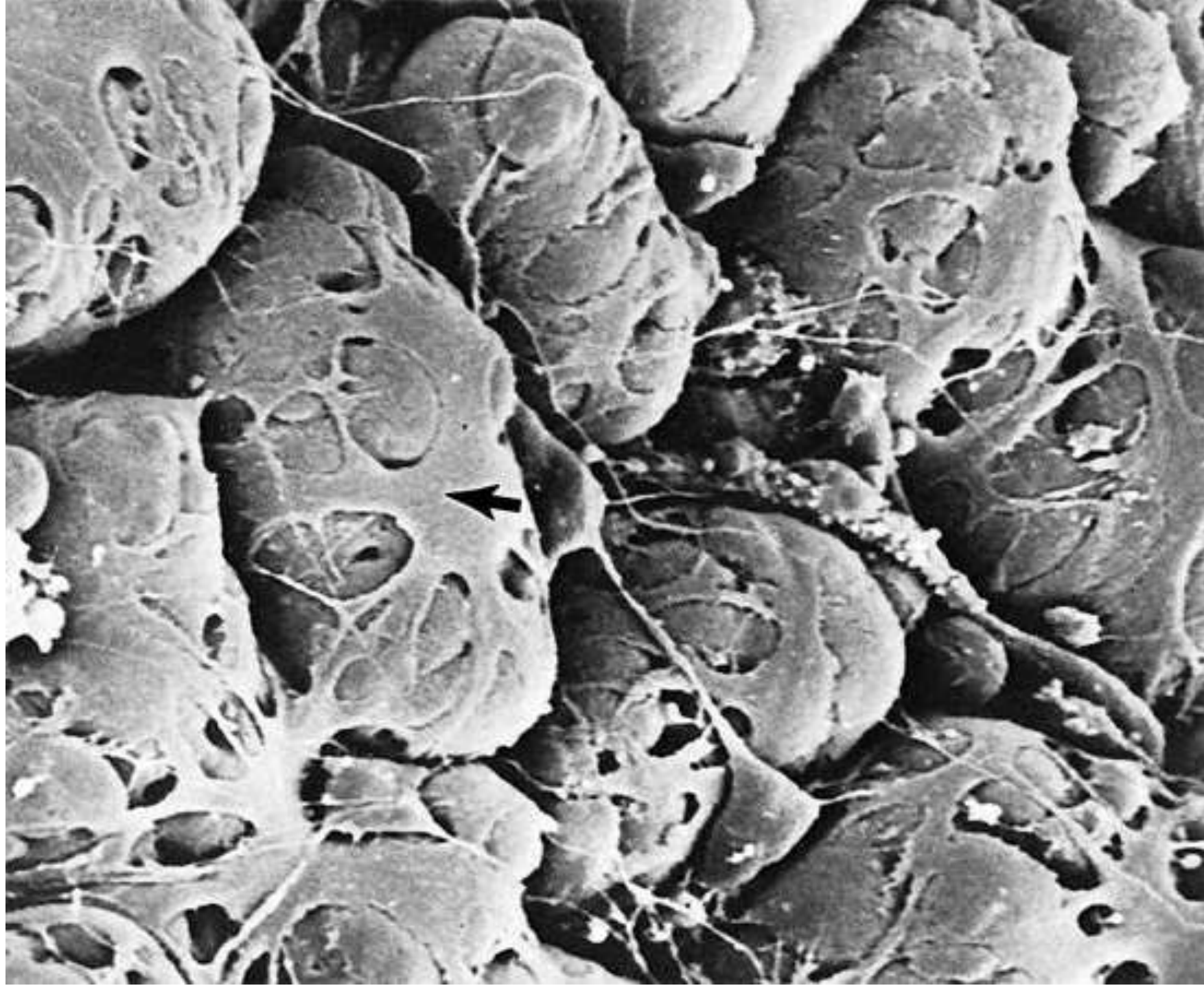


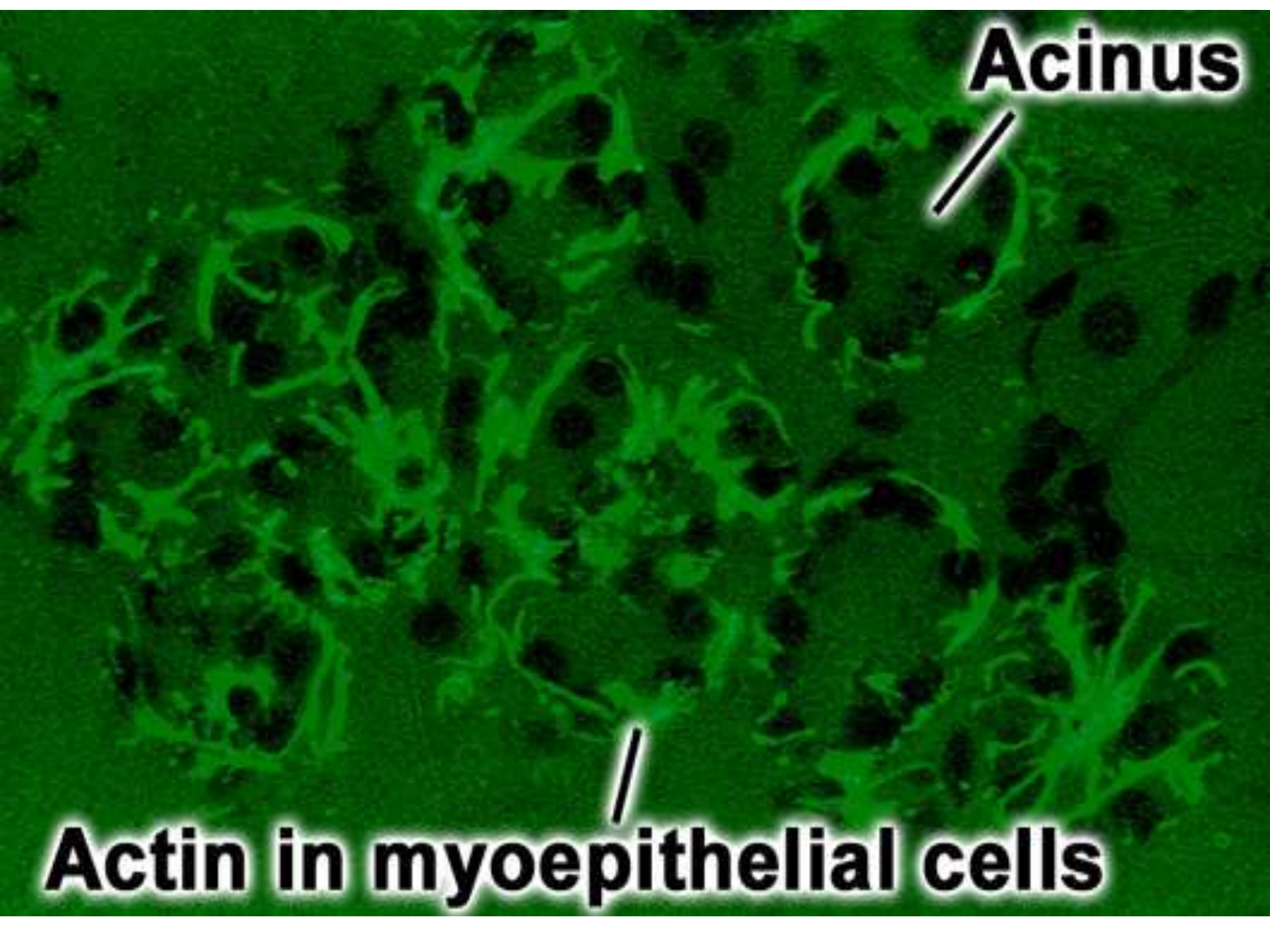
## **Myoepithelial cells**

**Stellate or spider-like cells with flattened nucleus and scanty cytoplasm with long branching processes that embrace the secretory and duct cells**









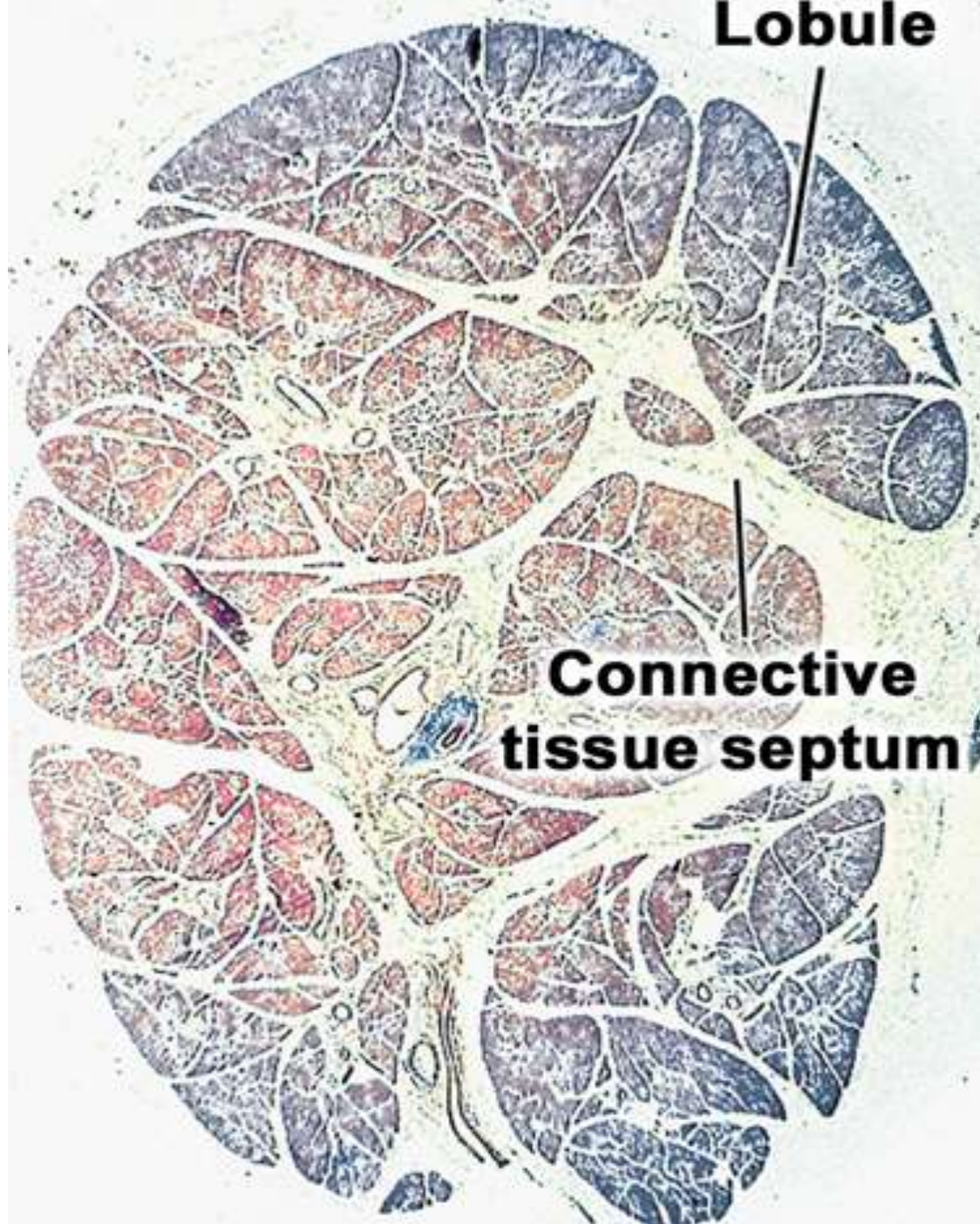
**Acinus**



**Actin in myoepithelial cells**

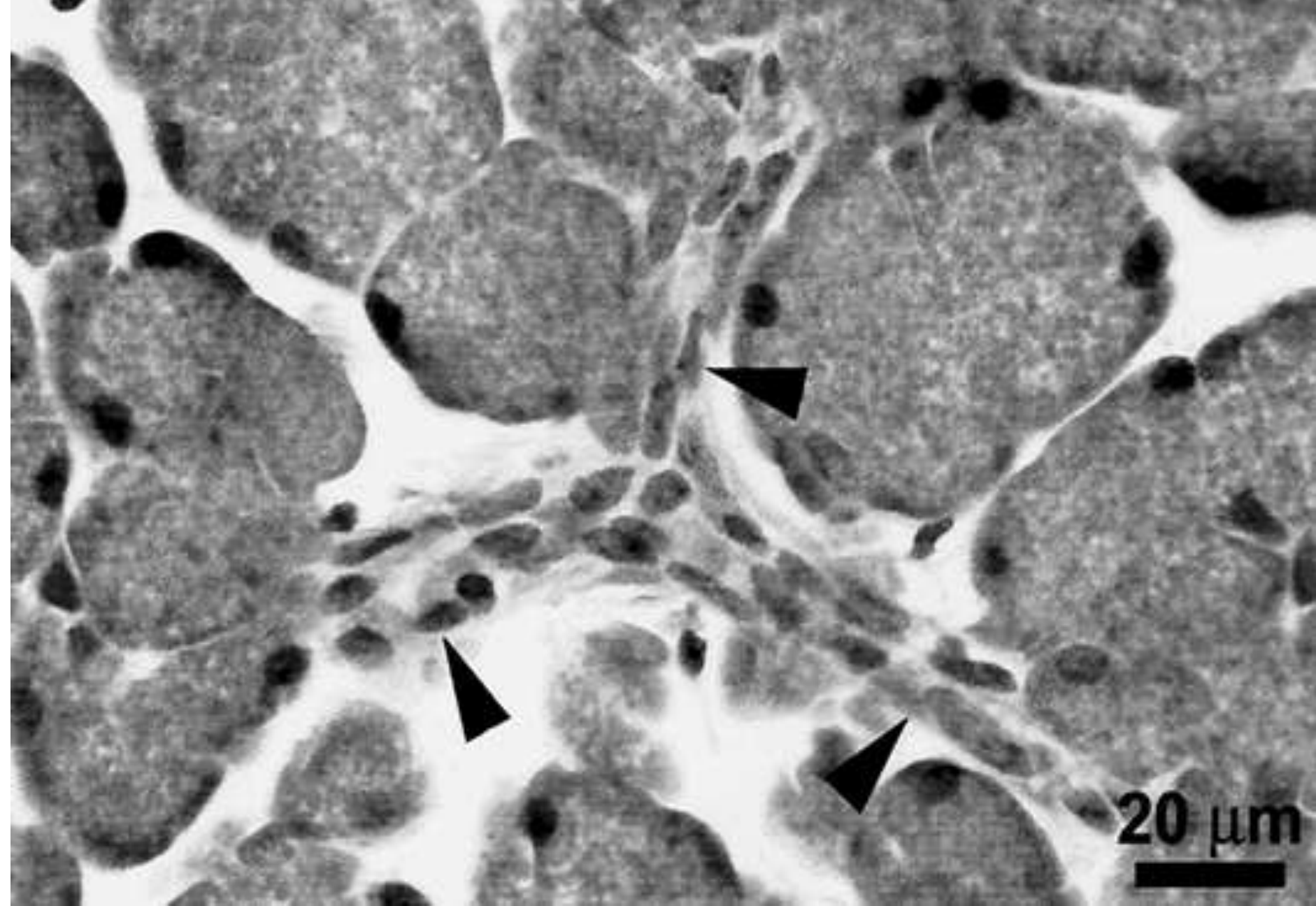




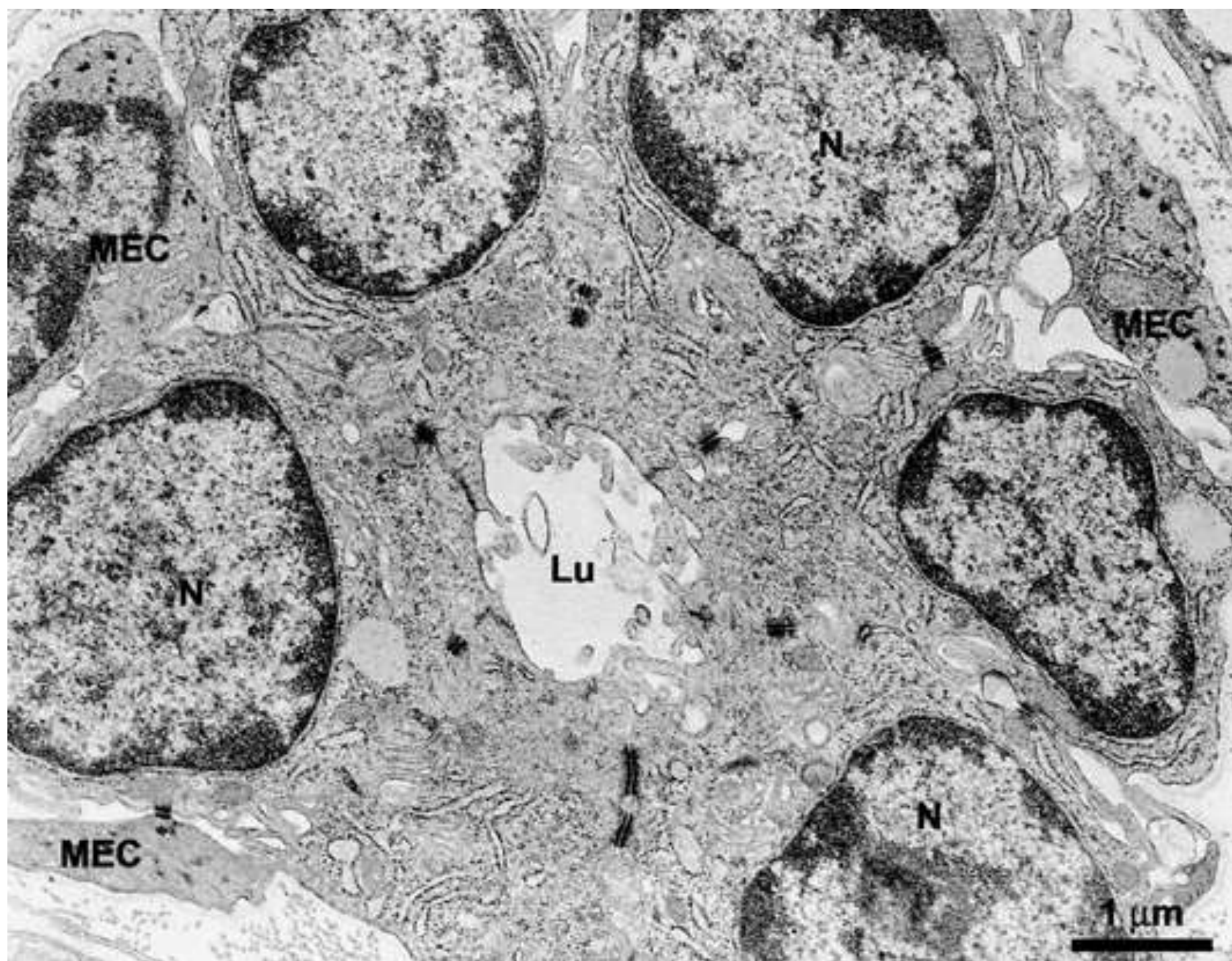


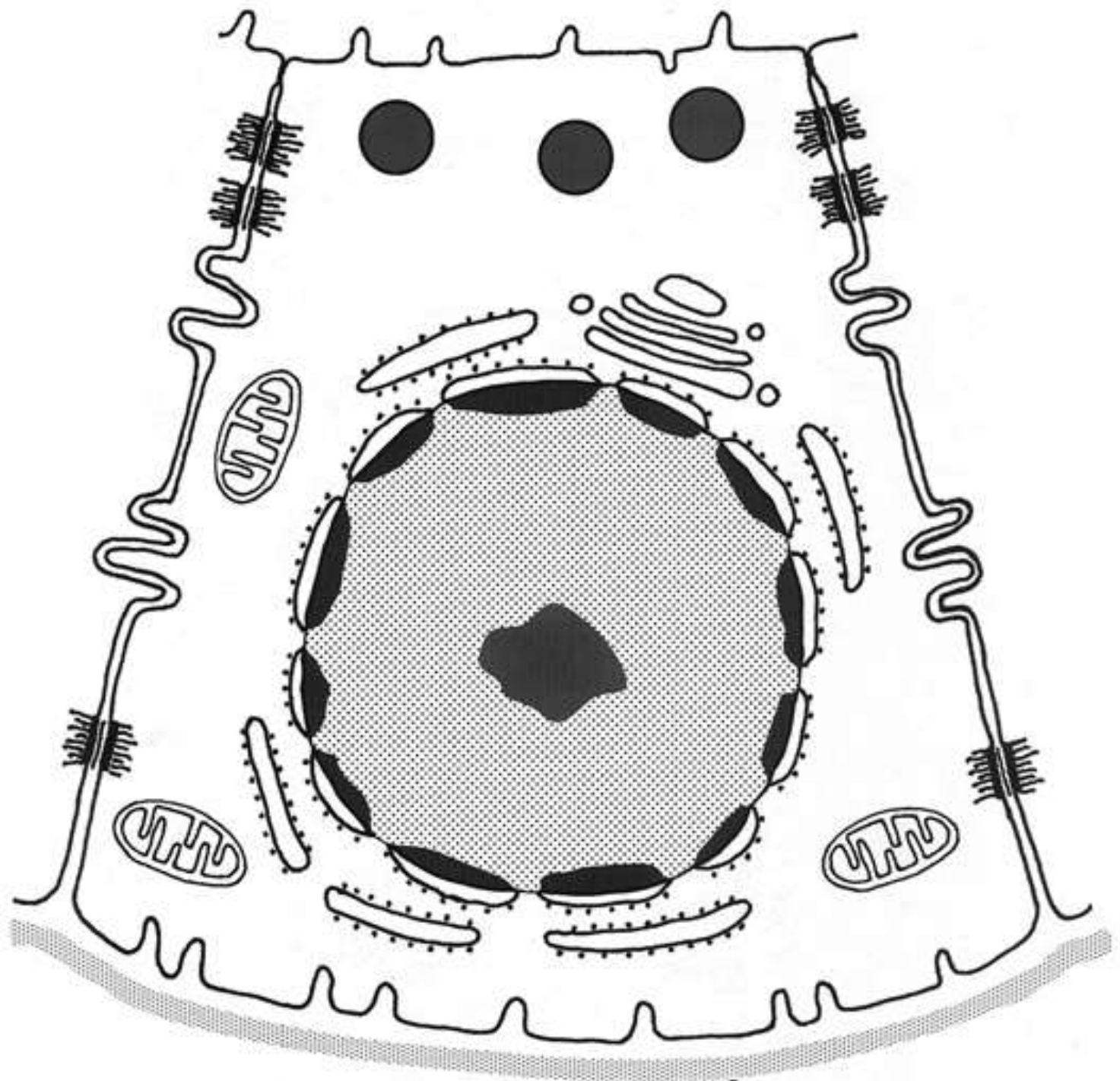
**Lobule**

**Connective tissue septum**











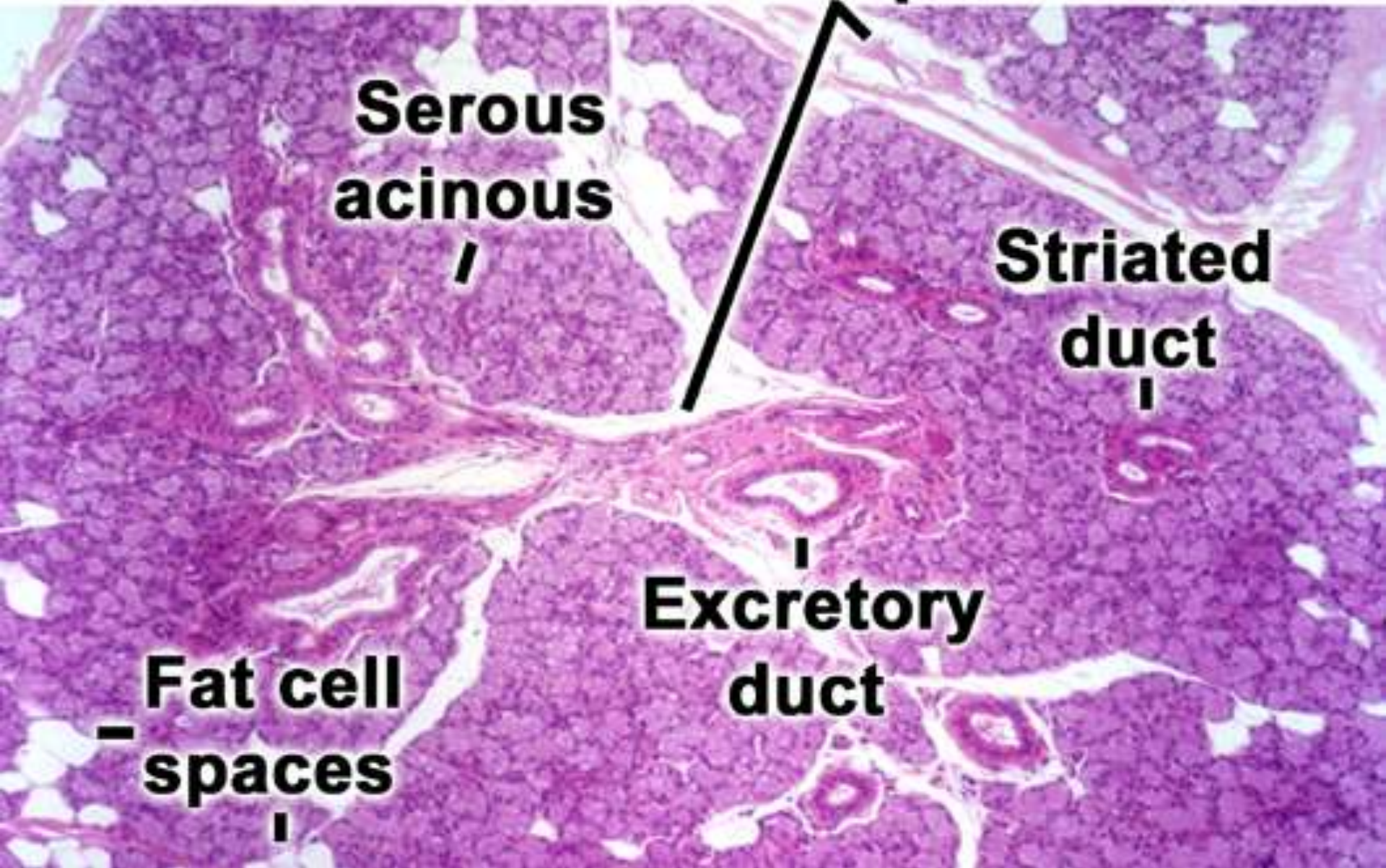
**Connective  
tissue septum**

**Serous  
acinous**

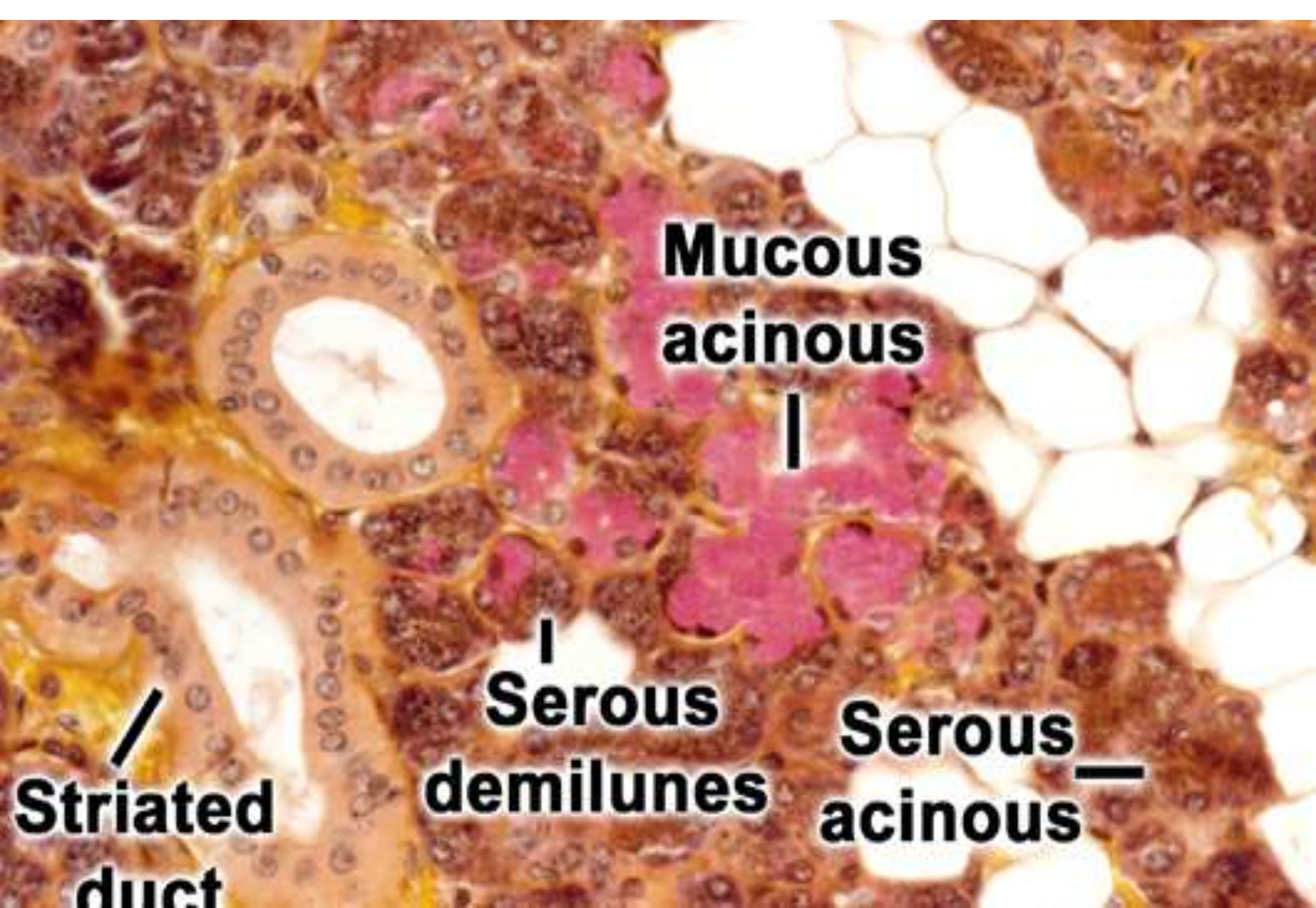
**Striated  
duct**

**Excretory  
duct**

**Fat cell  
spaces**







**Mucous  
acinous**



**Serous  
demilunes**



**Serous  
acinous**

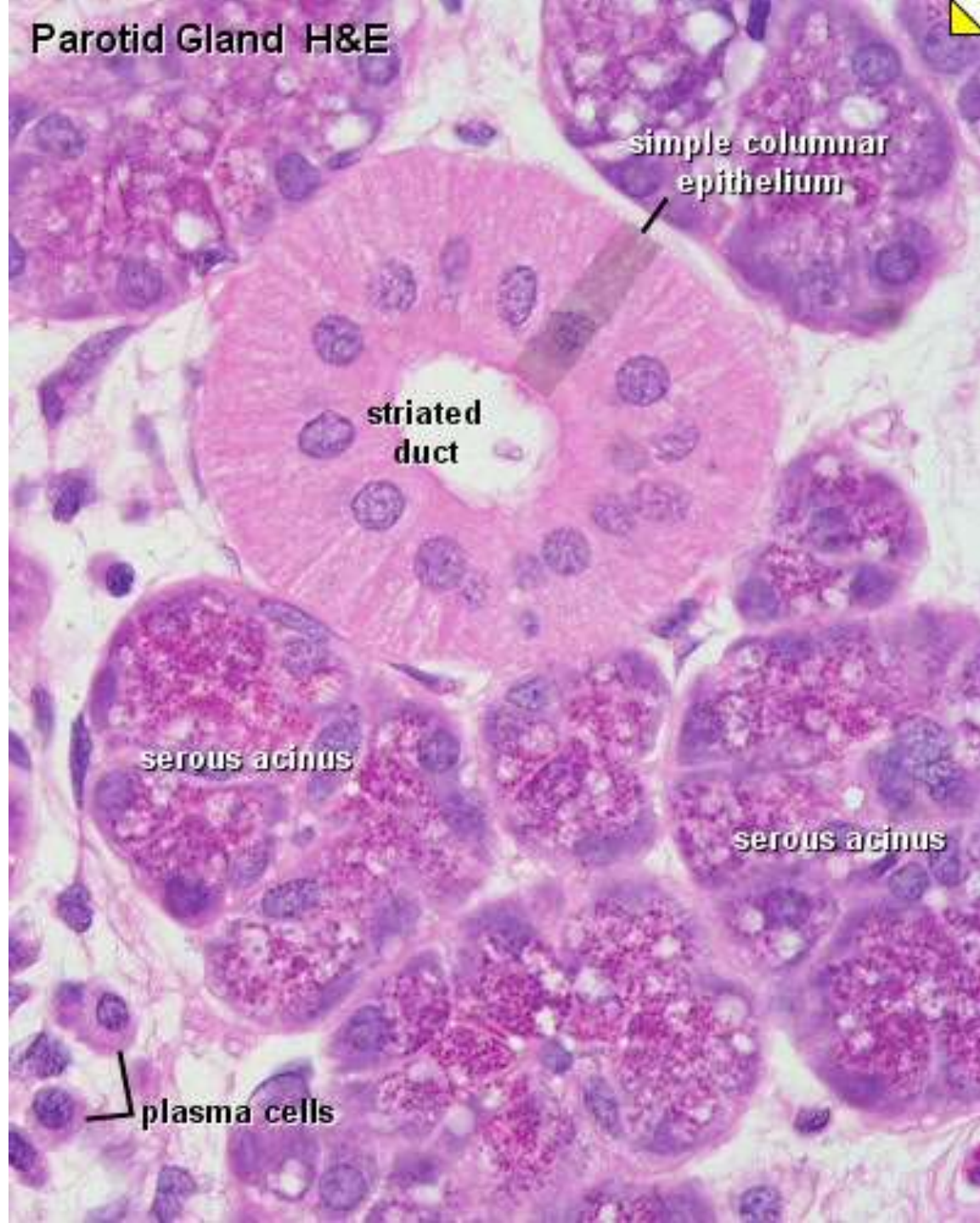


**Striated  
duct**





Parotid Gland H&E



simple columnar  
epithelium

striated  
duct

serous acinus

serous acinus

plasma cells



